

Instant glance
of thermo. image!

So small
it fits to your pocket!

Just press
to check temp.!



Feel more familiar to thermal image

This thermal image sensor is available to use not only as an industrial application but also at various situations!

Easy Thermo

Now, its time to SEE the temperature...

CHINO

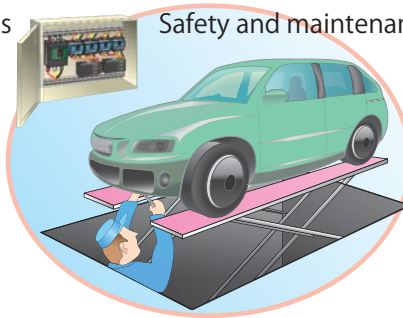
Applications

It is useful at various situations of temperature measuring.

Temperature check of building structures



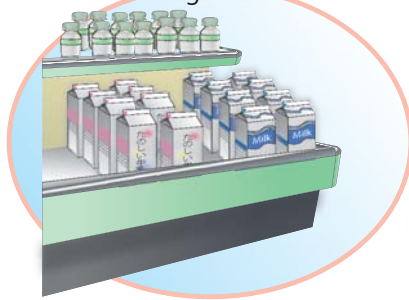
Safety and maintenance



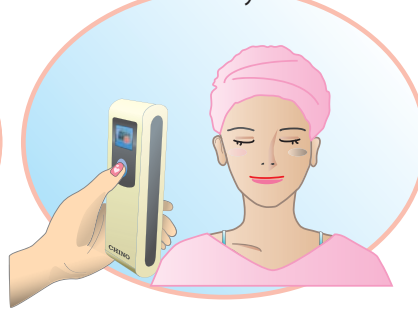
Temperature monitoring at server room



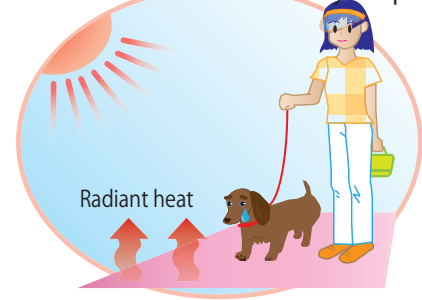
Refrigeration shelves



Health and beauty maintenance

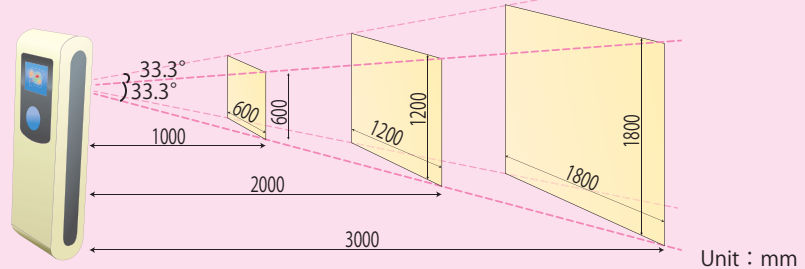


Health maintenance for your pets



Measurement View angle

33.3° × 33.3°
Minimum measuring distance : 350mm



Unit : mm

Specifications

Model	TP-S
Temperature Measuring range	-10 to 300°C
Detecting element	Thermopile (2000 pixels)
Temperature resolution	0.5°C
Accuracy ratings	±2% of measured value or ±3°C, whichever is greater
Frame rate	6Hz
Measuring display Function	Spot temperature display 1 point (Fixed at the center)
Power supply	AA battery x 2

Auto power OFF	Approx. 5 min.
Battery	Approx. 2 hr. (when using "Eneloop" or rechargeable NiMH battery)
Working Temperature range	0 to 50°C (Storage temperature -20 to 55°C)
Working humidity range	10 to 80%RH (no dew condensation)
Weight	180g (including batteries)
External dimensions	W50 x H138 x D39 (including lens)
Case material	ABS resin (antibacterial)

* To prolong battery life, NiMH (nickel hydride rechargeable battery) is recommended for use.

Company names and product names described in this document are trademarks or registered trademarks of their respective companies.

CHINO

KUMANO-CHO 32-8, ITABASHI-KU, TOKYO 173-8632
TEL.+81-3-3956-2171 FAX.+81-3-3956-0915